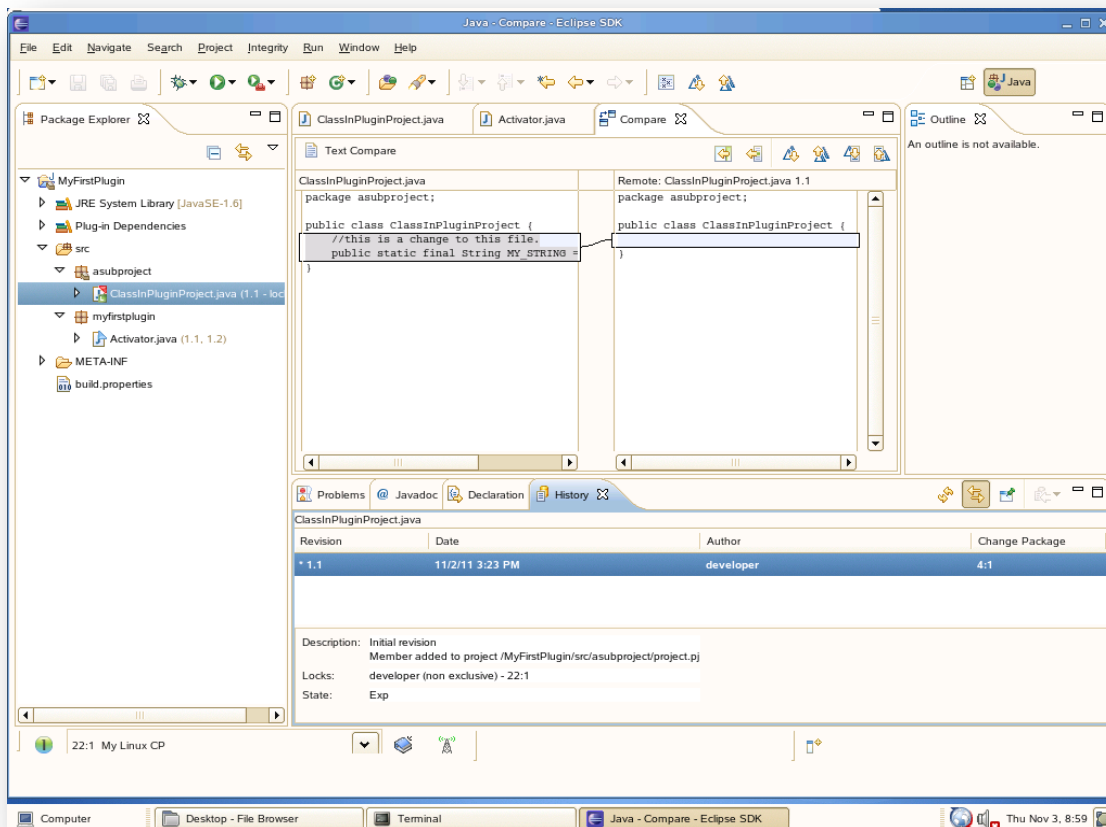


## Integrity 10 - Eclipse and Visual Studio Integrations

The performance and scalability of both the Eclipse and Visual Studio Integrity integrations have been improved in the Integrity 10 release.



### Eclipse integration - improved performance for display of file status

This release of Integrity improves the performance of the Eclipse integration when displaying status for files under Integrity version control.

## Eclipse integration updates for active change packages

With this release of the Integrity Eclipse integration, when you click the list of active change packages, the list of available change packages is displayed immediately without having to wait for the command to complete on the Integrity Client.

In addition, when the **Use active Change Package** option is enabled, all changes must be submitted using a change package and you no longer have the option of submitting individual changes using the **Submit Changes** command. If you select the **Use active Change Package** option, the **Submit Changes** command is no longer available.

## Support for 64-bit Eclipse Platform integration on 64-bit Windows operating systems

Integrity now supports an integration with the 64-bit Eclipse Platform running in a 64-bit Java Runtime Environment on Windows.

## Support for integration with IBM Rational RAD/RSA 8.0 and Eclipse 3.6-based development environments

Integrity now supports SCMs integration with IBM Rational RAD/RSA version 8.0 and Eclipse 3.6-based IDEs.

## Support for Eclipse integration on Linux

Integrity now supports an integration with the 32-bit and 64-bit Eclipse Platform on supported 32-bit and 64-bit Linux operating systems. The integration is based on the Eclipse open source initiative and allows you to access Integrity version control commands while using IBM Rational Platform technology.

## Learn More

For additional information see these Integrity Documentation resources:

- *The Integrity 10.0 Integrations User Guide*
- *The Integrity 10.0 Release Notes*